



**CREATE**

KEEPING THE GO IN CHICAGO

# Get On Board

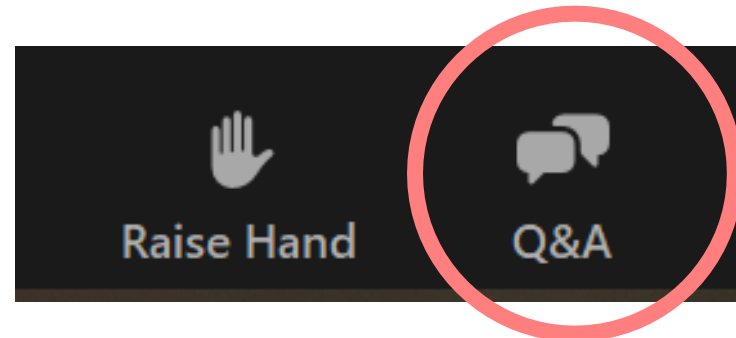
## Business Presentation Session 1

April 28, 2021



# Asking Questions

- Each of the Get On Board sessions, including this one, will be recorded to be shared online after the event
- Please stay muted with your camera off unless you are speaking
- You may submit questions through the Zoom Q&A feature
- Questions will be answered at the end of this session



# Itinerary

## Wednesday:

**10:00 a.m. – 11:30 a.m. Business Presentations Session 1**

**2:00 p.m. – 3:30 p.m. Business Presentations Session 2**  
**Confirmed Speaker:** U.S. Congresswoman Marie Newman

## Thursday:

**10:00 a.m. – 11:30 a.m. Business Presentations Session 3 and Closing Remarks**

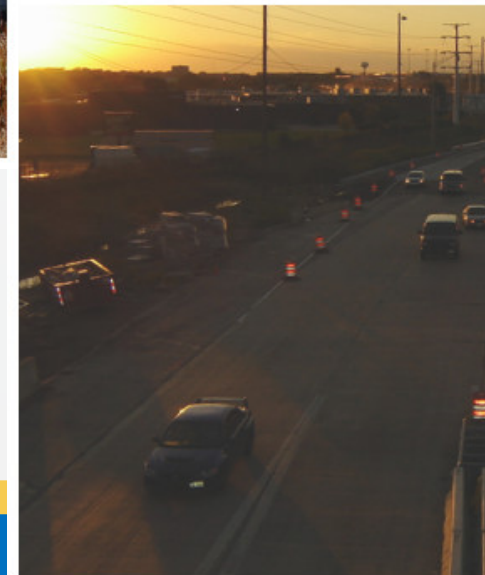
The Zoom ID to enter each of the following sessions is:

961 6717 2186

Anyone who registered has this information in their calendar holds.

# SEE3

BRINGING  
INFRASTRUCTURE  
PROJECTS TO LIFE



# Company Profile



- Founded in 2004 by Vernal Stewart
- ~80 total staff, and growing
  - 20 Registered PEs, PTOE
  - One Registered SE (4 structural engineers)
  - Certified Floodplain Manager
  - Electrical Engineer
  - CM Group: Staff of 10 (REs, Doc, Materials Coord, Inspectors)
- Offices in the States of Illinois, Texas, Colorado, Kansas, and Missouri
- Certified as a Disadvantaged Business Enterprise (DBE) in the States of IL (through Metra) IN, KS, MN, MO, ND, OH, and TX

# SE3 Qualifications show Depth and Flexibility.

## IDOT Prequalifications:

### SEFC PREQUALIFICATIONS FOR SE3, LLC

CATEGORY	STATUS
Location Design Studies - Rehabilitation	X
Special Studies - Traffic Studies	X
Special Studies - Location Drainage	X
Special Services - Construction Inspection	X
Highways - Roads and Streets	X
Location Design Studies - Reconstruction/Major Rehabilitation	X
Special Studies - Traffic Signals	X
Structures - Highway: Simple	X
Structures - Highway: Typical	X
Highways - Freeways	X
Special Studies - Safety	X

X	PREQUALIFIED
A	NOT PREQUALIFIED, REVIEW THE COMMENTS UNDER CATEGORY VIEW FOR DETAILS IN EPAS.
S	PREQUALIFIED, BUT WILL NOT ACCEPT STATEMENTS OF INTEREST

# SE3 Ongoing/Completed Projects



- Program Management – Cost Estimating, Planning
- Master Plan & Feasibility Studies
- Design Section Engineer, Construction Management
- General Engineering Consultant
- MLB Bridge Coordination with CN and BNSF Railroads
- Program Management Support
- Intersection Design Studies
- Traffic Impact Studies, Traffic Signal Design, Highway/Bridge Design
- Construction Inspection
- CREATE EW2 - sub to Benesch (Bridge Inspection)
- Bridge Inspection at Rockhill Parkway

# How SE3 can assist:



- Construction management roles including inspection, documentation, and design reviews.
- Site design: Parking lot design, grading, utility coordination, relocation and design
- Stormwater analysis, hydraulics and hydrology, final design.
- Geometric roadway design, Pavement marking and Signing, and Maintenance of Traffic
- Traffic Signal Design, and Traffic Analysis,
- Roadside Safety Design/Review



# How can you assist SE3

- **Mentoring opportunities to strengthen our firm resume**
- **Opportunity for SE3 to expand into Railroad design**
- **Give us an opportunity to showcase our Capabilities**

***Our GOAL is to become a “valuable asset” to your team,  
not just your DBE partner.***

***THANK YOU!***

A decorative horizontal bar at the bottom of the slide, consisting of a blue background with a yellow diagonal stripe on the right side.



# About Us

Empire construction is an Asian Indian-American company, owned by **Lubna Khan** a women and minority in the industry. Empire was established with the foundation of honesty, discipline, loyalty and quality. We believe that all team members make an important contribution to the success of our business, because teamwork is a process that thrives when we have leaders at all levels of our company. Empire is a diverse company. We seek diverse perspectives and embracing our differences, we serve our purpose, and we all share in success. Our differences make us stronger.

# Clients



# Services



## DESIGN & BUILD

With our in-house design team and construction professionals, we provide better solutions to each project as it can be unique to fit the clients need and desire.



## GENERAL CONTRACTING

Our estimators and project teamwork hand in hand to provide the best quality and qualified contractors.



## CONSTRUCTION MANAGEMENT

Management of project documents and providing full service of oversight and delivering projects on time and within budget.



## TRADE

In house qualified field professionals work from start to finish on every project to deliver quality work and maintain safe site conditions at all time



**EMPIRE**  
CONSTRUCTION

### CAPABILITY STATEMENT

**MBE Codes:**  
 25A210 Industrial/Building  
 25A220 Commercial Building  
 257110 Highways & Bridge Construction  
 25A114 Multi-Family Housing  
 259999 Specialty Trade Contractor

**CLASS**  
 00048757  
 C8528  
 33.395

**CORPORATE PROFILE:**  
 Empire Construction Company (ECC) is DBA Small Business Administration and MBE owned business offering a full range of general contracting, design and construction management services. We strive to assist our clients in achieving their organizational goals and goals through building construction. Our work is more than just building. Empire strives to exceed the client's expectations and create a relationship of trust and success. With over 50 years of combined experience, Empire prides the staff and resources to complete a wide variety of projects in a safe, efficient, and professional manner.

**By collaborating with Empire, you are working with a team devoted to achieving success on your project. Empire holds strong values in a safe work environment, client satisfaction, growing and maintaining diverse partnerships.**

**SERVICES:**  
 \*Design Build  
 \*General Contracting and Construction Management  
 \*Turnkey Construction and Renovation  
 \*Site Development  
 \*Industrial, Interior Build-out, Commercial, & Residential  
 \*Full Package  
 Division 2 - Demolition  
 Division - Rough Carpentry  
 Division 9 - Finishes

1212 N. LEXINGTON  
 SUITE 1000 CHICAGO, ILLINOIS  
 312.462.8888



Protecting Our Water Environment



Metropolitan Water Reclamation District of Greater Chicago

# CERTIFICATIONS & LICENSES

EMPIRE CONSTRUCTION IS AN ASIAN INDIAN-AMERICAN COMPANY, OWNED BY LUBNA KHAN A WOMEN & MINORITY IN THE INDUSTRY.

76

PROJECTS COMPLETED

489,330

HOURS

90%

RETURN CLIENTS

# Projects



**FedEx**

Empire Construction Company & Ghafari Associates delivered a complete renovation to the active FedEx facility at O'Hare Airport, project consist of interior renovations to the warehouse and offices, and site work that took place on an active airport site.



**Trinity Park Vista**

The state of art apartment building - Ground up development for the new senior home in Northlake, IL. Project consist of high-end lobby, gaming room and ADA apartments..



**Morton College**

Empire Construction delivered phase II off toilet room upgrades which consists of complete 8 bathrooms renovation bringing all new MEP's and finishes.



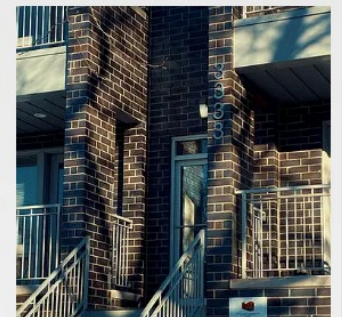
**Fifth Third Bank**

Empire Construction was awarded 10 Fifth Third locations from CBRE and Gilbane Company. Project consist of exterior improvements and ADA upgrades.



**Baum Revision**

Restoring an abandon building in Bucktown, an upcoming residential and commercial neighborhood, with an outstanding location on western, Armitage and Milwaukee Ave, bringing 4 commercial spaces and 20 luxury apartments



**3333 Michigan LLC**

New Development of high end 24 residential units on Michigan Ave, an upcoming residential area near Illinois Institute of technology.



COMPREHENSIVE CONSTRUCTION CONSULTING, INC.

CREATE: GET ON BOARD BUSINESS-TO-BUSINESS  
NETWORKING EVENT

# ABOUT US



## **Certifications/ Prequalifications**

- City of Chicago Disadvantaged Business Enterprise
- Cook County Minority Business Enterprise
- Capital Development Board Prequalified: Construction Management
- Cook County Prequalified: Construction Management
- Illinois Department of Transportation Prequalified: Construction Inspection
- LEED AP Certified: New Construction

## **Sectors**

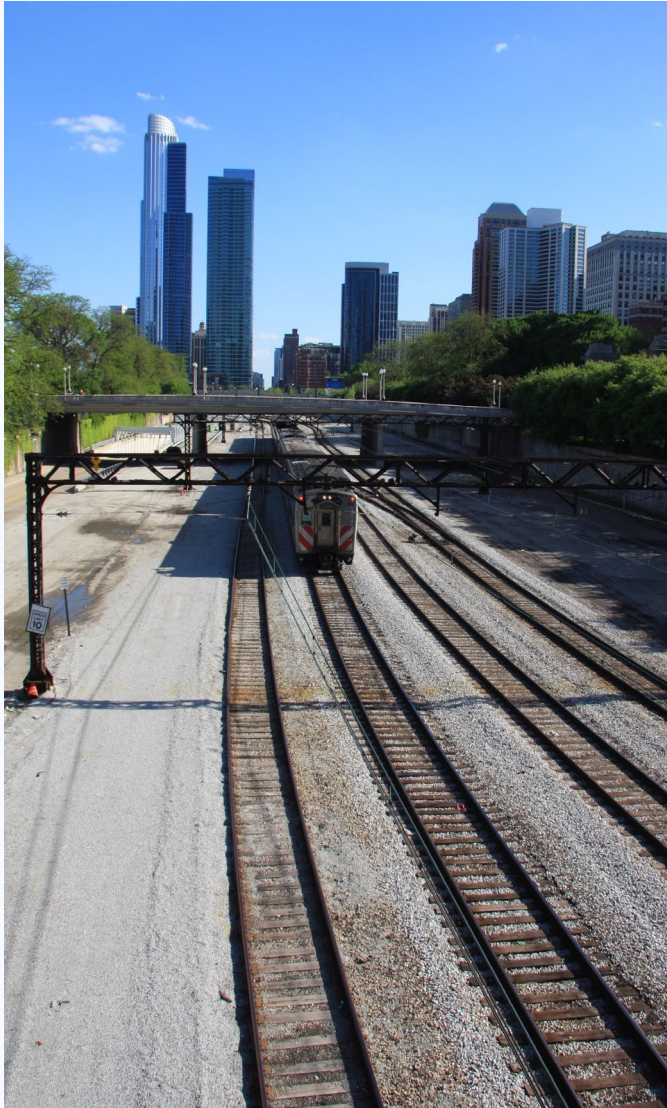
- Aviation
- Buildings/Facilities
- Rail
- Roadways
- Utilities



## CORE SERVICES

- Claims Management
- Construction Inspection
- Construction Management
- Constructability Review
- Cost Estimating
- Design Review
- Facilities Assessment
- Owners Representation
- Phase I & III
- Project Controls
- Project Scheduling
- Public Communications & Outreach
- Risk Assessment





## RELEVANT EXPERIENCE

- Metra 71<sup>st</sup> and Southshore Station Reconstruction
- CTA 95th and Dan Ryan Terminal Renovation
- CTA Wilson Avenue Station Reconstruction
- CTA Red Purple Modernization Advanced Utility Relocation
- CTA Track Improvements- Green Line Lake Line & South Mainline
- CTA Job Order Contracting Program
- CTA Task Order- Construction Management for Adjacent Construction
- CTA Task Order Non-Revenue Station Reconstruction

# CONTACT US



**PAUL KING**

**BUSINESS DEVELOPMENT PRINCIPAL**

(312) 848-7529

KING2THING@AOL.COM



**JOHN BOLDEN, PE**

**CHIEF TECHNICAL OFFICER**

(312) 907-3056

JBOLDEN@COMPREHENSIVECC.COM



**ANGELA BOYLE**

**MARKETING COORDINATOR**

(312) 752-8161

ABOYLE@COMPREHENSIVECC.COM

# **Kazina Henderson**

## **Kazina Consulting**



 exp.

Brian Umbright, SE, PE | Vice President , Transportation  
312.616.7495 | [brian.umbright@exp.com](mailto:brian.umbright@exp.com)



# AT A GLANCE

## #5

Top 115 Rail Sector  
Architecture + AE Firms  
BD+C, 2020

## #29

Top 500 Design Firms  
ENR, 2020

## 250+

Chicago Professional

## 90+

Offices Worldwide

## 115

Years in Service

## 3,500+

Global employees

## Services

- Architecture + Design
- Automation + Instrumentation
- Bridge Design + Inspection
- Building Science
- Civil
- Commissioning
- Construction Engineering + Inspection
- Construction Management
- Electrical
- Environmental
- Geotechnical
- Health + Safety
- Land Development
- Landscape Architecture
- Lighting Design
- Materials Testing
- Mechanical
- Operations + Maintenance
- Pavement Engineering
- Plumbing + Fire Protection
- Program Management
- Railway Engineering
- Roadway Design
- Security
- Structural
- Survey + Geomatics
- Sustainability + LEED
- Technology Design
- Traffic Engineering + Modeling
- Transportation Planning
- Urban Planning + Design
- Water + Wastewater
- Water Resources

**EXP's operational headquarters is located in Chicago**

EXP is currently involved in 3 of the largest transit projects in North America

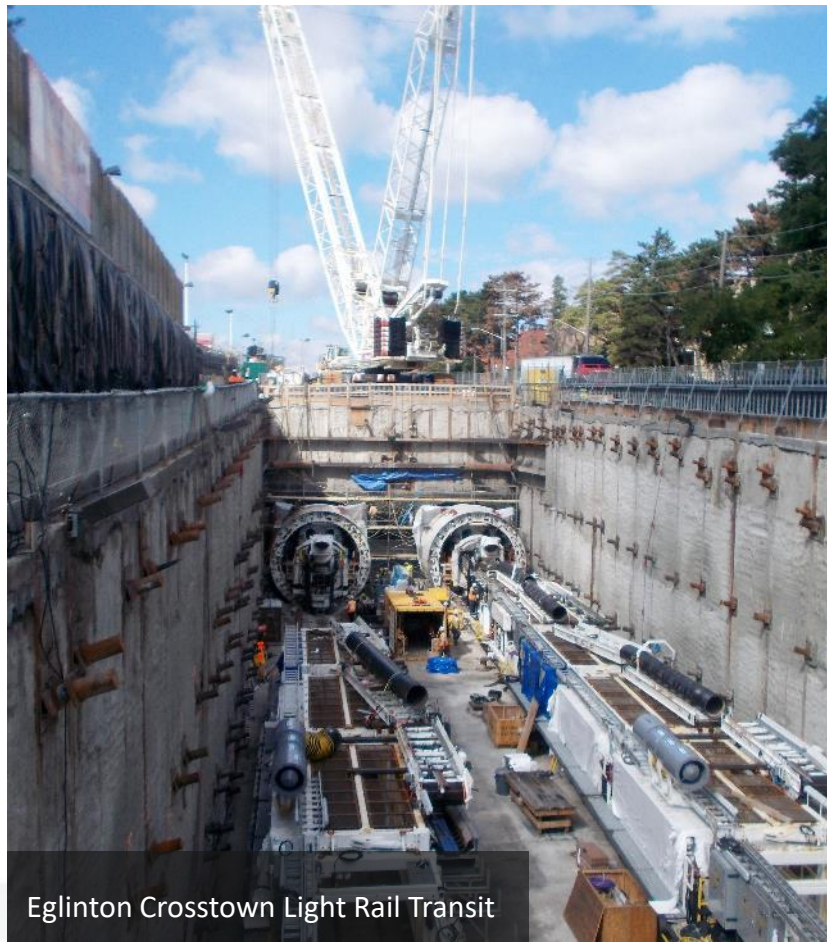


Chicago Transit Authority Red Purple Modernization

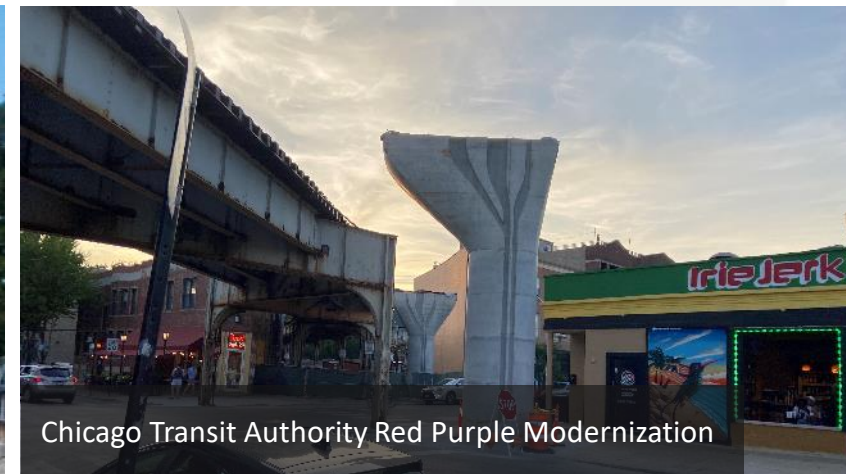


Hurontario Light Rail Transit

*Photo Credit: Infrastructure Ontario*



Eglinton Crosstown Light Rail Transit



Chicago Transit Authority Red Purple Modernization



Hurontario Light Rail Transit

*Photo Credit: Infrastructure Ontario*



**John Flint, PE**  
Senior Vice President

- 40 years of rail experience
- Key Player in the development of Brightline system in Florida



**Brian Umbright, SE, PE**  
Vice President, Transportation

- 27 years of experience
- Leads EXP's US Central Transportation practice



**Nate Morriss, SE, PE**  
Senior Project Manager, Rail

- 25 years experience with rail bridges
- Former Director of Civil/Structural Engineering at Metra



**Peter Windschmitt**  
Vice President, Mobility Technology

- Former Class I Railroad Employee
- Expert in RTC Modeling / Rail Operations Analysis



**Erik Steavens**  
Project Manager, Rail & Transit

- 20 years of experience in both the public and private sector
- Multi-modal planner with policy, grant and financing funding expertise



**Rene Lipp, P.Eng, M.Eng**  
Team Lead, Railway Engineering

- 18 years of experience
- Track design expertise in both heavy rail and transit



**Joshua Jackson, PE**  
Senior Mechanical Engineer,  
Heavy Movable structures

- 14 years of experience
- Heavy movable, tunneling and mining systems expertise



**Magdy Samaan, PhD, PE**  
Vice President, Transportation

- 25 years of experience
- Complex Structural Analysis and Condition Assessment / Seismic Analysis





## COMMITMENT TO DIVERSITY AND INCLUSION

EXP is committed to fostering opportunities for diverse firms throughout North America. EXP's Chicago practice started as an MBE firm in 1959.

We work with a wide variety of firms, but look for firms that share similar philosophies with EXP  
**A client focused mentality | A strong desire to do quality work | An entrepreneurial spirit that drives innovation**

EXP has a long history of diversity within our workforce

**22%**

Minority Employees

**22%**

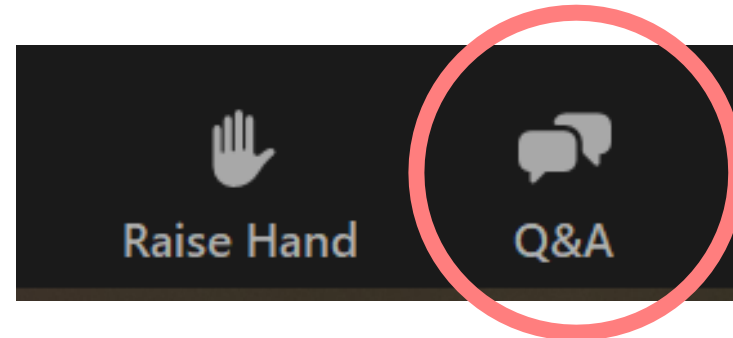
Female Employees

EXP is committed to achieving meaningful growth and strengthening our community of professionals

EXP has partnered with Lindbloom Academy to mentor high school students from underserved communities and diverse backgrounds and inspire the next generation of architectural and engineering professionals

# Questions?

- Reminder: each of the Get On Board sessions will be recorded to be shared online after the event
- If you have any questions now, please submit them in the Q&A box now
- If you have questions after this panel, please submit them at [info@createprogram.org](mailto:info@createprogram.org) or through the Contact Us tab of the website [createprogram.org](http://createprogram.org)



# Panelist Contact Information

- SE3: Rafael Herrera
  - [rherrera@se3.us](mailto:rherrera@se3.us) and 630-641-9900
- Empire Construction: Lubna Khan
  - [khan@empire-construct.com](mailto:khan@empire-construct.com) and 312.374.3388
- Comprehensive Construction Consulting: Angela Boyle
  - [aboyle@comprehensivecc.com](mailto:aboyle@comprehensivecc.com) and 312-353-3000
- Kazina Consulting: Kazina Henderson
  - [kazinahenderson@yahoo.com](mailto:kazinahenderson@yahoo.com) and 312-848-7735
- EXP: Brian Umbright
  - [brian.umbright@exp.com](mailto:brian.umbright@exp.com) and 312.616.7495

# Itinerary

## Wednesday:

**2:00 p.m. – 3:30 p.m. Business Presentations Session 2**

**Confirmed Speaker:** U.S. Congresswoman Marie Newman

## Thursday:

**10:00 a.m. – 11:30 a.m. Business Presentations Session 3 and Closing Remarks**

The Zoom ID to enter each of the following sessions is:

961 6717 2186

Anyone who registered has this information in their calendar holds.



# Stay in Touch!

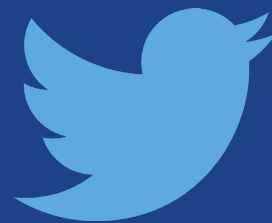
**E-mail:** [info@createprogram.org](mailto:info@createprogram.org)

**Website:** [createprogram.org](http://createprogram.org)



**Like us on Facebook**

[@CREATEProgramChicago](https://www.facebook.com/CREATEProgramChicago)



**Follow us on Twitter**

[@CREATE\\_Chicago](https://twitter.com/CREATE_Chicago)